



GUILDCREST ESTATES



32 Richborough Close, Margate CT9 4FA



2



2



1



GUILDCREST ESTATES

Richborough Close, Margate CT9 4FA

£239,950

Located in the popular and sought after Richborough Close, Margate, this nearly new terraced house built in 2016 is a gem waiting to be discovered. Boasting an airy lounge, a convenient downstairs WC, and a modern kitchen/diner, this property offers a perfect setting for comfortable living. With 2 bedrooms, an en suite, and a family bathroom, there's ample space for relaxation and privacy.

The low maintenance garden is perfect for any family to enjoy, while the allocated parking ensures you never have to worry about finding a spot. This property is an ideal choice for those looking for their first home, offering a blend of modern amenities and a warm, welcoming atmosphere.

Conveniently located near the Westwood shopping centre, you'll have easy access to a variety of shops, restaurants, and amenities, all within walking distance. Nestled between the coastal towns, you are close to the sandy beaches of and Margate, Broadstairs and Ramsgate with blue flag status.

Public transport in the area is fantastic. There are regular, local bus services, covering the whole of Thanet and Canterbury. There are several railway stations close by, including the High Speed Link to London, making commuting easy.





To make this beautiful house your home,
book your viewing today.

Council Tax Band B

Service Charge is £240 PA

Freehold

Mains water, sewer, electricity and gas with
gas central heating

Fixed wireless broadband





GUILDCREST ESTATES

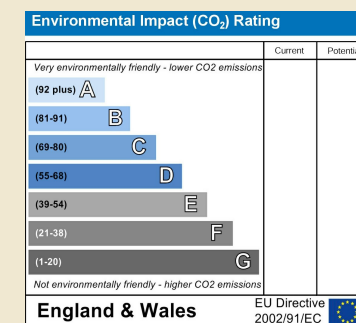
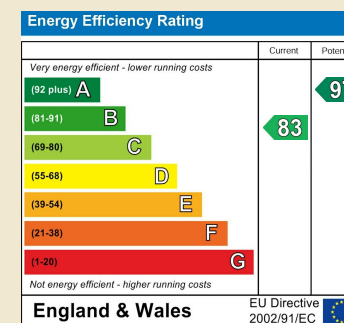
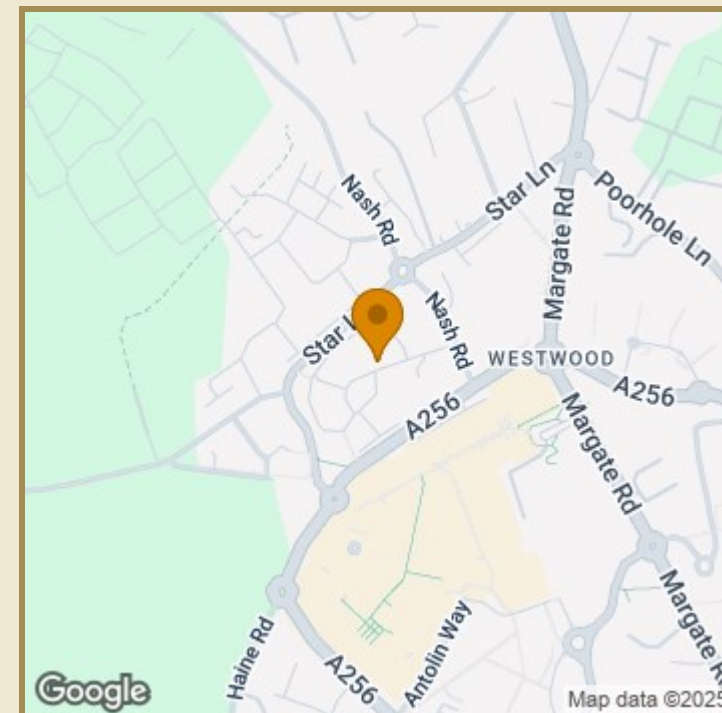
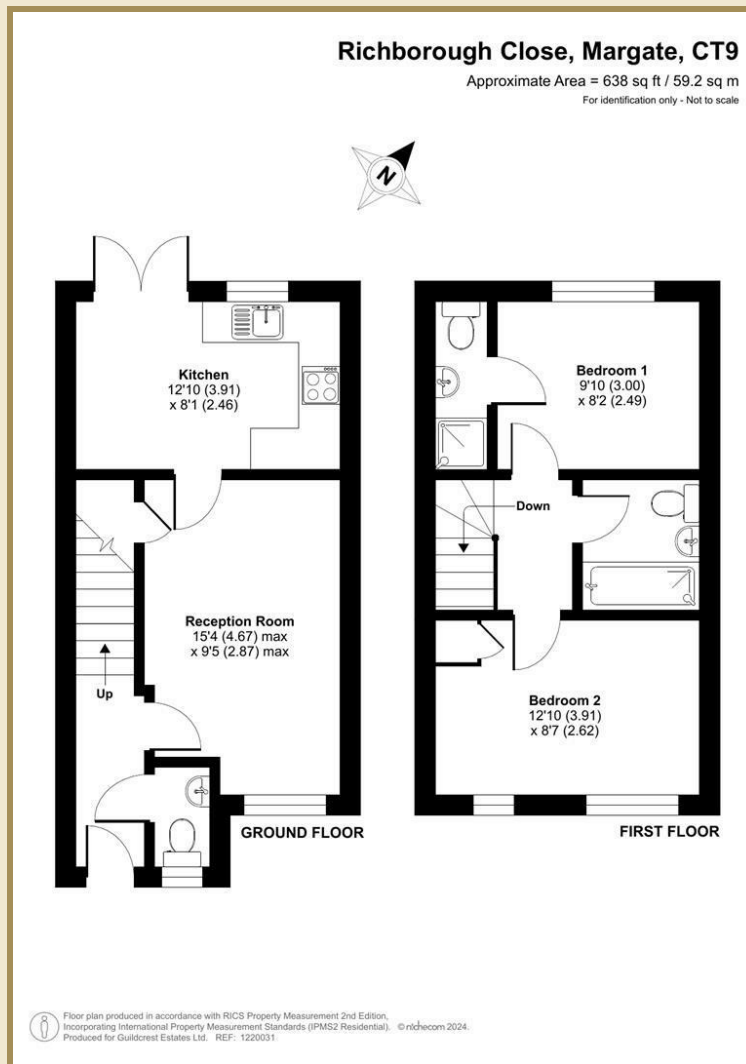
Key Features

- 2 Bedrooms
- En Suite to master bedroom
- Downstairs WC
- Modern kitchen/dining room
- Close to Westwood shopping center
- Allocated parking space
- EPC rating B
- Council tax band B

Important Information

Freehold
House - Terraced
638.00 sq ft
Council Tax Band B
EPC Rating B

£239,950



01843 272200 www.guildcrestestates.co.uk

1 The Laurels, Manston Business Park, Ramsgate, Kent CT12 5NQ



Guildcrest Estates Ltd. Registered Office 1 Percy Road, Broadstairs, Kent CT10 3LB. Company Number: 13135084 Registered In England & Wales | VAT Number: 374 4288 71

Disclaimer These particulars, whilst believed to be accurate are set out as a general outline only for guidance and do not constitute any part of an offer or contract. Intending purchasers should not rely on them as statements of representation of fact, but must satisfy themselves by inspection or otherwise as to their accuracy. No person in this firm's employment has the authority to make or give any representation or warranty in respect of the property.